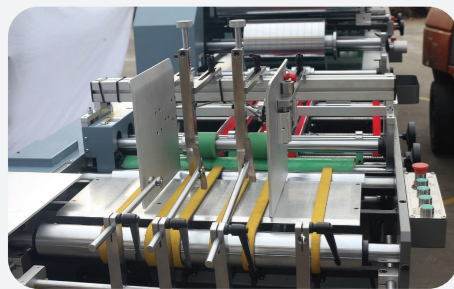
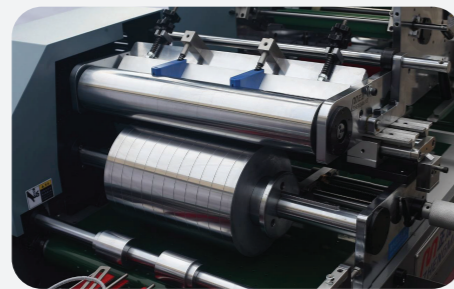




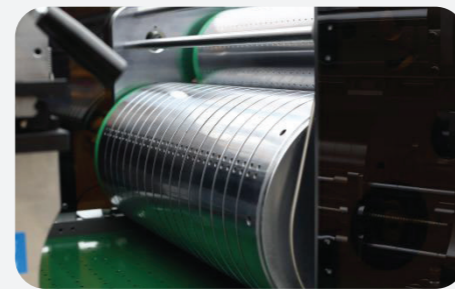
WINDOW PATCHER
High Speed Single Panel



Feeding Unit



Gluing Unit



Laminating Unit

Technical Specification:

Model	TC-800H	TC-1050H	TC-1200H
Blank length	100-750	100-750	100-890
Blank width	80-800	80-1050	80-1200
Film length	60-520	60-520	60-520
Film width	30-520	30-840	30-1000
Paper weight	250-1500 / m ² ≤6 mm	250-1500 / m ² ≤6 mm	250-1500 / m ² ≤4 mm
Film thickness	0.03-0.2 mm	0.03-0.2 mm	0.03-0.2 mm
Mechanical speed	18000 pcs/h	18000 pcs/h	16000 pcs/h
Positioning accuracy	±1 mm	±1mm	±1mm
Power voltage	380v/50Hz	380v/50Hz	380v/50Hz
Machine power	10 Kw	12 Kw	14 Kw
Machine weight	3500 Kg	4500 Kg	4800 Kg
Dimension	5980×1250×1650mm	5980×1470×1650 mm	5980×1670×1650 mm

SUBA SOLUTIONS PRIVATE LIMITED
No. 1/479 - A, 8th Street, Eraniemman Koil, GST Road,
Vandalur, Chennai - 600048, Tamilnadu, India.
Phone: +91 98849 99585 E-mail: marketing@subasolutions.com
www.subasolutions.in

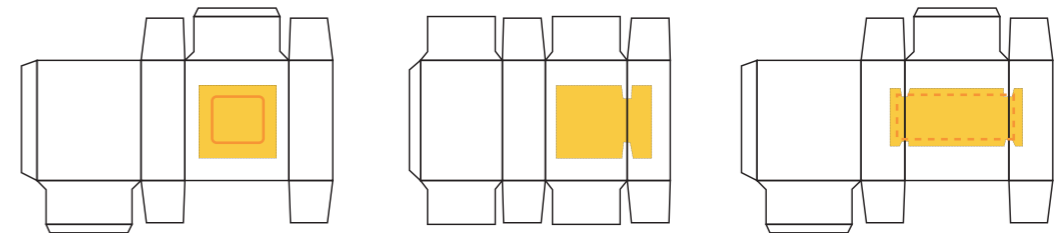


[f](#) [y](#) [@](#) [v](#) [in](#) /subasolutions

*Technical specification is subject to regular change without notice due to continuous improvements in the machine.



WINDOW PATCHING SOLUTIONS

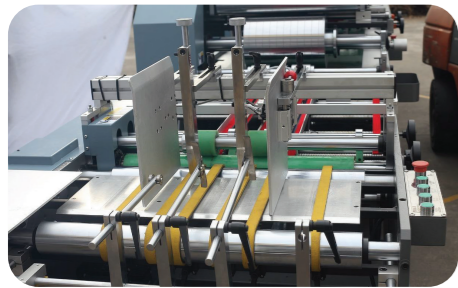


www.subasolutions.in

HYBRID



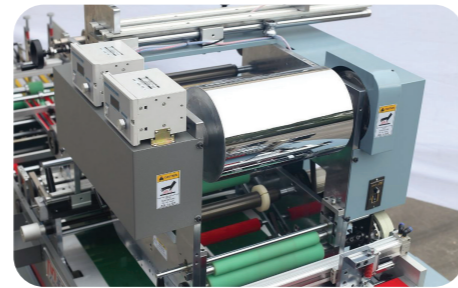
HYBRID WINDOW PATCHER
Specialty Precision V Cut + High Speed Single Panel



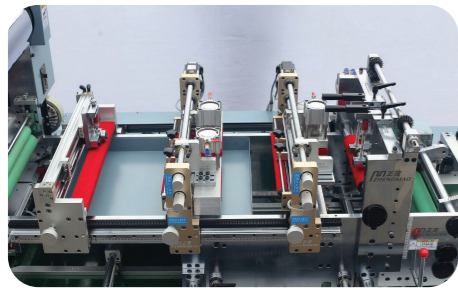
Feeding Unit



Gluing Unit



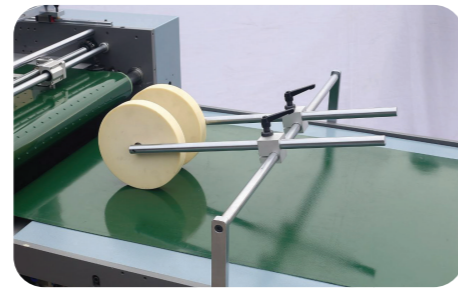
Heater System



Digital Corner Cutting Unit



Film Patching Unit

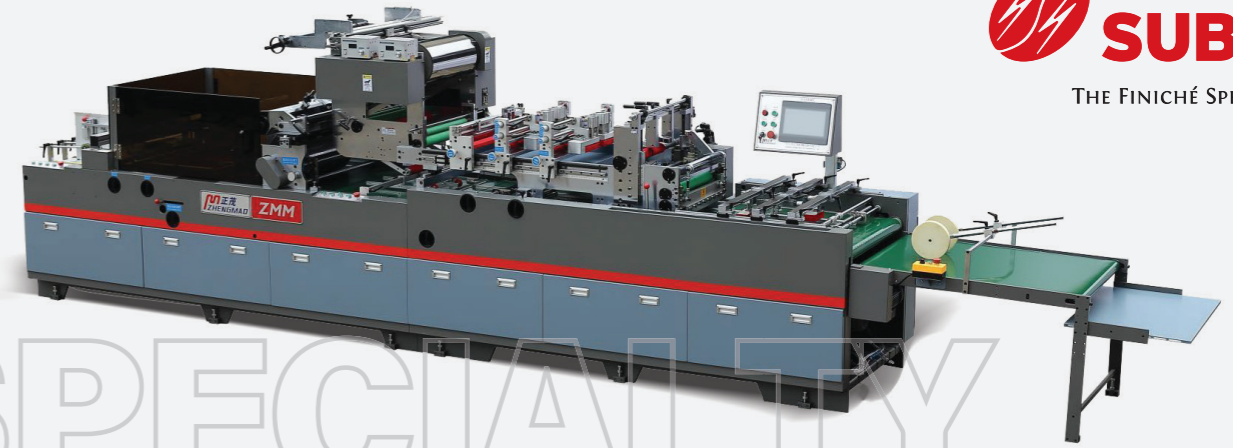


Delivery Unit

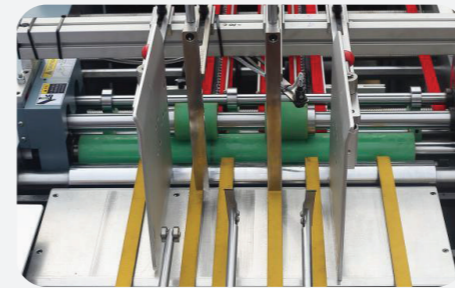
Technical Specification:

Model	V-Cut 800H with Regular Patching	V-Cut 1050H with Regular Patching
Max. paper size (W x L)	800 x 750 mm	1050 x 750 mm
Min. paper size (W x L)	80 x 100 mm	80 X 100 mm
Max. film size (W x L)	300 x 300 m (V-cut) / 520 x 520 (Regular Patching)	500 x 350 m (V-cut) / 840 x 520 (Regular Patching)
Min. film size (W x L)	30 x 50 mm	30 x 50 mm
Film thickness	0.03-0.2 mm	0.03-0.2 mm
Precision	±0.5 (V-cut) / ±1 mm (Regular Patching)	±0.5 (V-cut) / ±1 mm (Regular Patching)
Speed	3000-7000 (V-cut) 3000-9000 pcs/h (paper length 100-750) 3000-18000 (paper length 100-400 mm)	3000-7000 (V-cut) 3000-9000 pcs/h (paper length 100-750) 3000-18000 (paper length 100-400 mm)
Dimension	9600 x 1420 x 1650 mm	9600 x 1670 x 1650 mm
Power	12 Kw	19 Kw
Weight	3500 Kg	4500 Kg

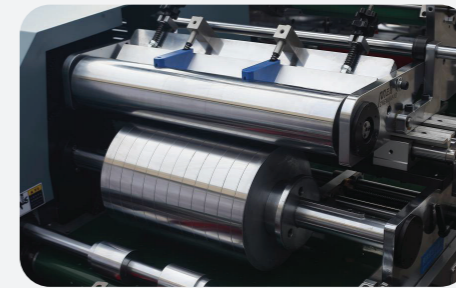
SPECIALTY



V-CUT WINDOW PATCHER



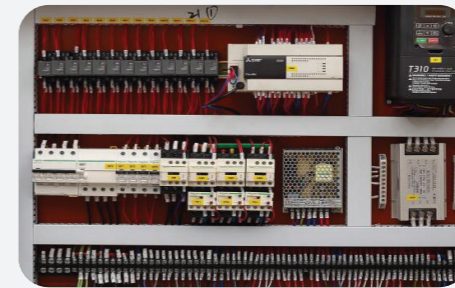
Feeding Unit



Gluing Unit



Laminating Section



Appliance Parts



Delivery Unit

Technical Specification:

Model	V-Cut 800	V-Cut 1050	V-Cut 1200
Blank length	180-750	180-750	200-890
Blank width	150-800	180-1050	180-1200
Film length	70-300	70-350	70-350
Film width	30-300	30-500	30-500
Paper weight	250-1500/m ² ≤ 6mm	250-1500/m ² ≤ 6mm	250-1500/m ² ≤ 6mm
Film thickness	0.1-0.4 mm	0.1-0.4 mm	0.1-0.4 mm
Mechanical speed	7000 pcs/h	7000 pcs/h	6000 pcs/h
Positioning accuracy	±0.5 mm	±0.5 mm	±0.5 mm
Power voltage	380v/50Hz	380v/50Hz	380v/50Hz
Machine power	5.5/17 Kw	7.5/19 Kw	9.5/21 Kw
Machine weight	3500 Kg	4000 Kg	4500 Kg
Dimension	7200×1250×1850 mm	8000×1470×1850 mm	8000×1670×1850 mm