

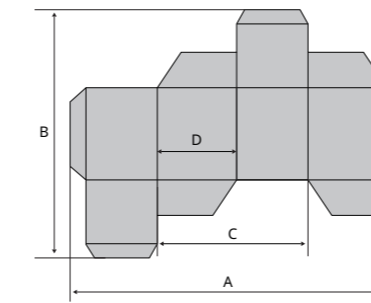
ETERNA always puts quality first during the development. Each product goes through rigorous and meticulous tests. Attention from every tiny detail, every production process, every technology procedure, even the small aspect of product management, is taken very seriously. Because we always uphold the philosophy of manufacturing the highest quality products for our customers.

Eterna is committed to creating folder gluers with the highest quality standards.

Specifications		
Stock Range		
Card board	300-800 g/m ²	
Corrugated board	E/ B/ C/ A Flute	
Power System		
Max. Belt Speed	200 m/min	
Jogging Speed	20 m/min	
Total Power Requirement	31.5 kw	
Max. Air Requirement	0.7 m ³ /min	
Machine Dimensions		
	1350	1450
Machine Dimensions	16.8 x 2 m	16.8 x 2.1 m
Weight	8 Ton	8.5 Ton

* In the interests of product improvement, the manufacturer reserves its rights to change specifications and features without notice.

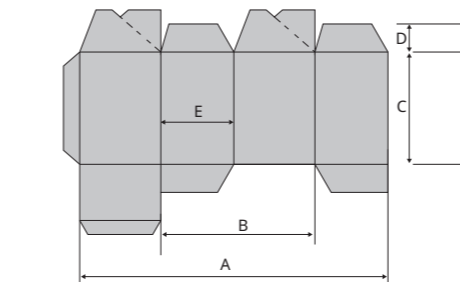
BOX SIZES



Straight-line boxes Unit: mm (inch)

	1350	1450
A	380-1350 (14.96-53.14")	380-1450 (14.96-57.09")
	**240-1350 (9.45-53.14")	**240-1450 (9.45-57.09")
B	150-900 (5.91-35.43")	150-900 (5.91-35.43")
	**120-900 (4.72-35.43")	**120-900 (4.72-35.43")
C	Min 185 (7.28")	Min 185 (7.28")
D	Min 50 (1.97")	Min 50 (1.97")

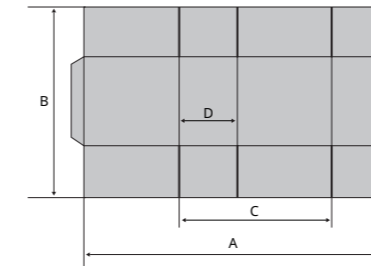
**Small Box Folding Device Applied as Optional



Crash-lock bottom boxes Unit: mm (inch)

	1350	1450
A	380-1350 (14.96-53.14")	380-1450 (14.96-57.09")
	**240-1350 (9.45-53.14")	**240-1450 (9.45-57.09")
B	Min 185 (7.28")	Min 185 (7.28")
C	100-540 (3.94-21.26")	100-540 (3.94-21.26")
	**70-540 (2.76-21.26")	**70-540 (2.76-21.26")
D	35-200 (1.38-7.87")	35-200 (1.38-7.87")
E	Min 50 (1.97")	Min 50 (1.97")

**Small Box Folding Device Applied as Optional



Regular Slotted Container (RSC) Unit: mm (inch)

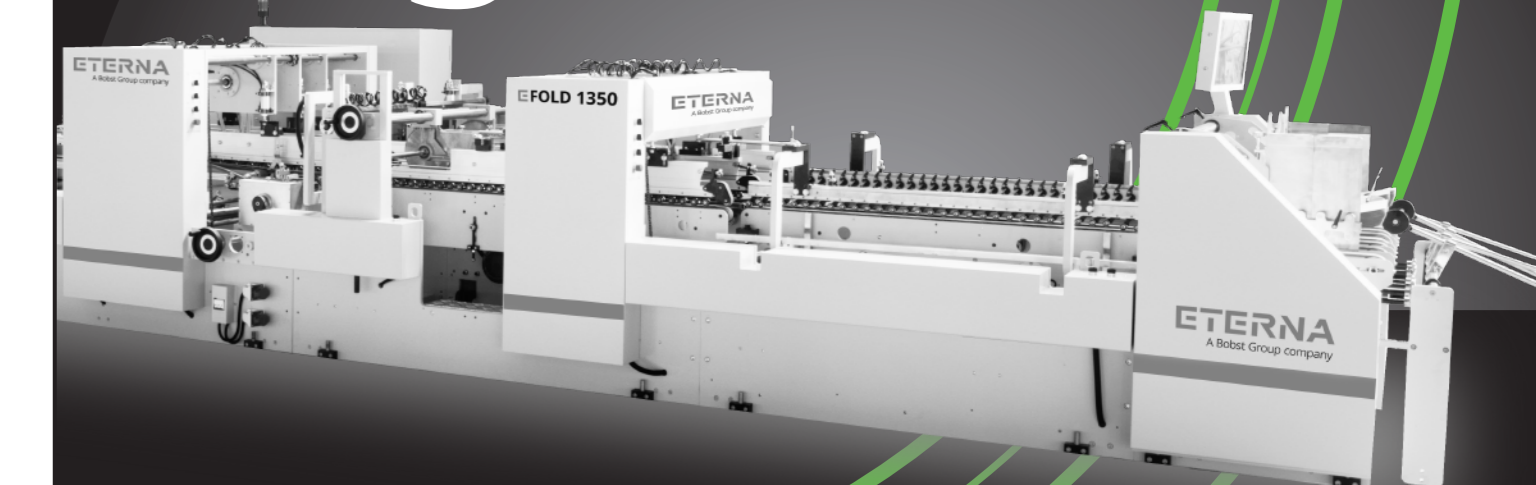
	1350	1450
A	380-1350 (14.96-53.14")	380-1450 (14.96-57.09")
	**240-1350 (9.45-53.14")	**240-1450 (9.45-57.09")
B	180-900 (7.09-35.43")	180-900 (7.09-35.43")
	**120-900 (4.72-35.43")	**120-900 (4.72-35.43")
C	Min 185 (7.28")	Min 185 (7.28")
D	Min 50 (1.97")	Min 50 (1.97")

**Small Box Folding Device Applied as Optional

Automatic Folder Gluer
for Corrugated Board

EFOLD 1350/1450

Simply right



Automatic Folder Gluer
for Corrugated Board

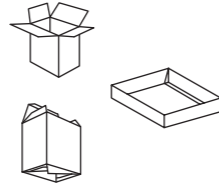
EFOLD 1350/1450

Eterna delivers the simple and good solution you need.
We engineer and manufacture folder gluers that matches your expectation.



Configuration

C2



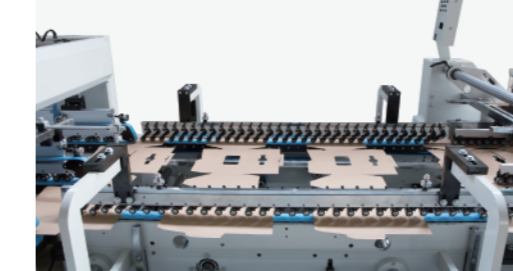
C2 = Straight line boxes, double wall boxes
and crash-lock bottom boxes (pre-break section optional)

EFOLD 1350/1450



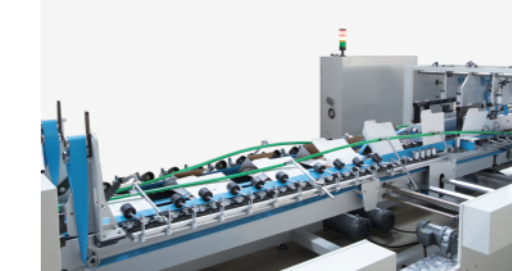
FEEDER SECTION

- Designated A/C motor with micro-adjustable variable speed controller for even spacing of box blanks;
- Individual adjustable feed belts (four of which are suction belts) ensure easy setup and smooth feeding;
- Motorized embossing roller guiding the belts to transport sheet.



SIDE-ALIGNMENT SECTION

- The side-alignment section guarantees the stability of high speed sheet feeding between the feeder and lock bottom section.



FINAL FOLD SECTION

- Left and right conveyor belt speed can be adjusted separately, to correct the carton again and ensure conveying in the straight line.



TROMBONE SECTION

- Upper and lower belt can move forward and backward to adjust, equipped with trimming correction device, paper jammed detection device.



LOCK BOTTOM SECTION

- Three-carrier construction meets diversified folding requirements;
- Easy for mounting lock bottom accessories, more operator friendly.



GLUING SYSTEM

- Two sets of conventional lower gluing pot (left and right side) at final folding section;
- Upper gluing wheel system at lock bottom section can be applied (optional);
- Non-contact gluing system can be purchased separately from the third party.



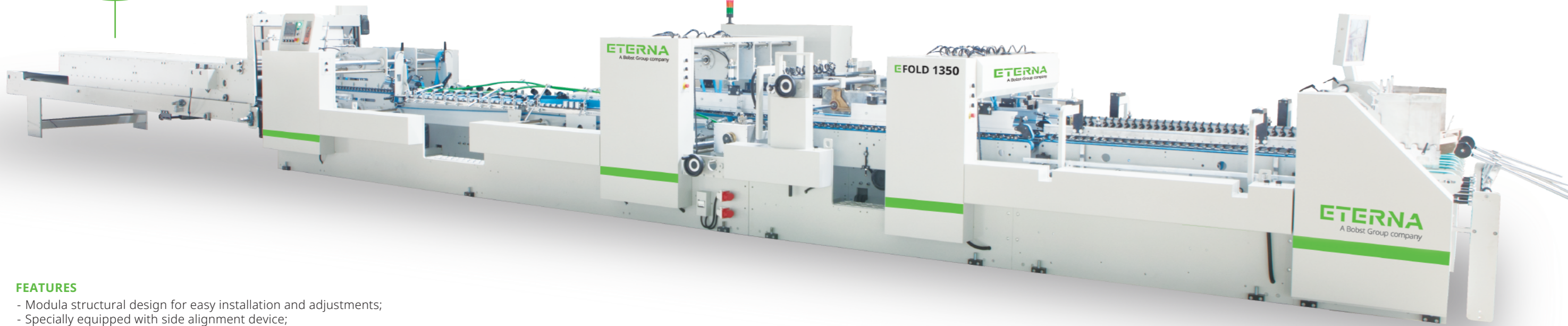
CONVEYOR COMPRESSION SECTION

- Two operation modes of compressing belt speed;
- Pneumatic pressing system for easy adjustment to increase the gluing effect.



FEEDER LOADER

- It can be connected in line with window patching machine and inspection machine to improve production efficiency.



FEATURES

- Modula structural design for easy installation and adjustments;
- Specially equipped with side alignment device;
- Reinforced upper carrier with power drive and pneumatic cylinders, suitable for corrugated products in various thickness;
- Ergonomically designed accessories for easy operation and adjustments;
- One tool for adjustments throughout the entire machine;
- Trombone unit is equipped with various jogging and aligning devices to avoid "fish tailing" phenomenon;
- The delivery section adopts cylinder type pressuring system for easy adjustments and better pressing results;
- Color touch screen control panel;
- Remote control included.